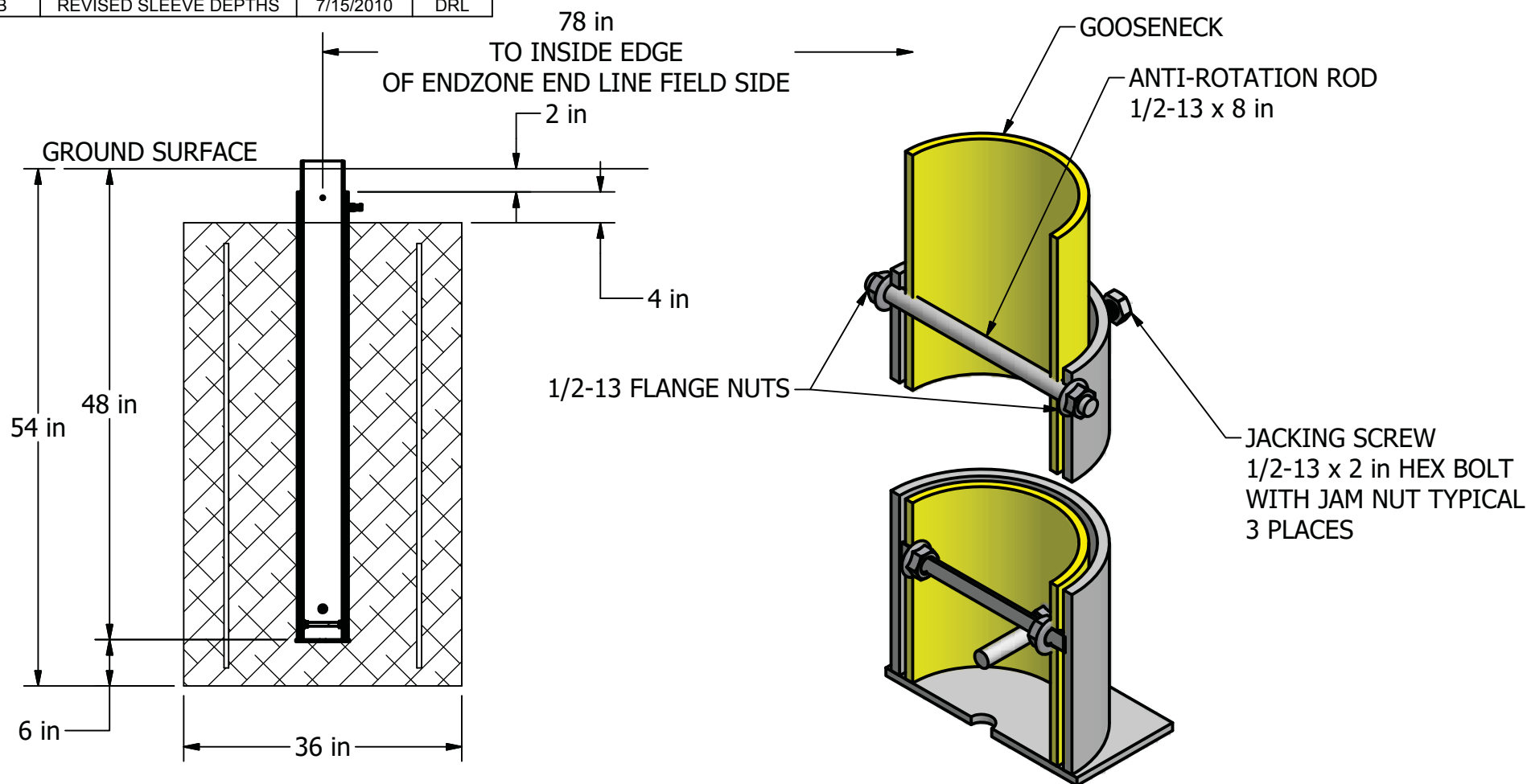


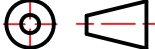
REV	DESCRIPTION	DATE	BY
B	REVISED SLEEVE DEPTHS	7/15/2010	DRL



SECTION A-A

FIGURE 4

NOTE: ASSEMBLE THE THREADED RODS AT THE BASE OF THE GOOSENECK AS SHOWN, PLUMB THE GOOSENECK WITH THE THREE BOLTS AT THE TOP OF THE SLEEVE BEFORE CROSS DRILLING THROUGH THE SLEEVE AND MAST AND ASSEMBLING THE 8 in THREADED ROD AND NUTS AS SHOWN.

THIS DRAWING IS THE SOLE PROPERTY OF JAYPRO SPORTS INC. AND MAY NOT BE REPRODUCED WITHOUT WRITTEN PERMISSION OR CONSENT			
PROJECTION METHOD:		TOLERANCES:	
		$\frac{x}{4} = \pm \frac{1}{16}$ $x.x = \pm 0.1$ $x = \pm \frac{1}{16}$ $x.xx = \pm 0.01$ $x.xxx = \pm 0.005$	
UNLESS OTHERWISE SPECIFIED			
TITLE:		INITIALS:	DATE:
DESIGNER:		DONL	4/7/2010
CHECKER:		WVB	
SIZE:	SCALE:	REV.:	DRAWING NAME:
A	N/A	B	GROUND SLEEVE

JAYPRO SPORTS, LLC, 976 HARTFORD TURNPIKE, WATERFORD, CT 06385 USA



PHONE:  
800.243.0533 (TOLL FREE)  
860.447.3001 (LOCAL)

FAX:  
860.444.1779 (SALES)  
860.440.0628 (ENG.)

PART NUMBER:  
FB SLV6 INSTRUCTIONS

SHEET:  
1 OF 2